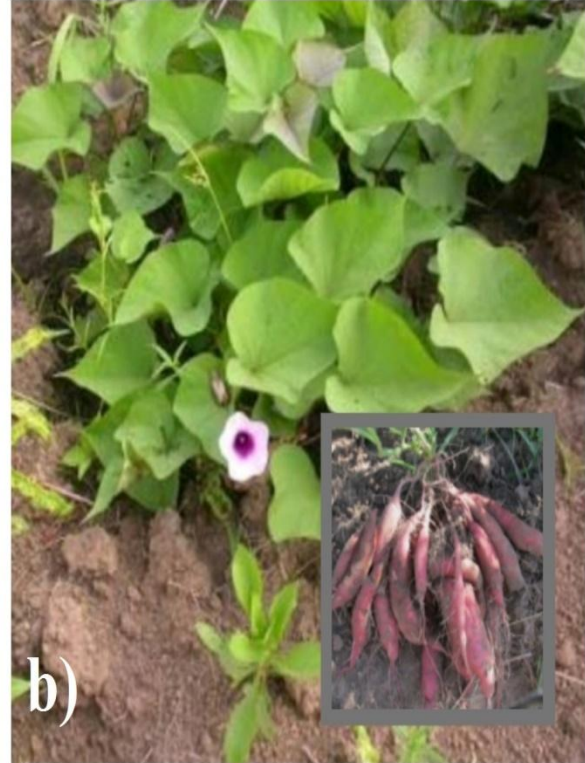




**Fig.3:** a) *Acorus calamus*  
c) *Asparagus racemosus*

b) *Zingiber officinale*  
d) *Bombax ceiba*





**Fig.4:** a) *Hemidusmus indicus*  
c) *Mimosa pudica*

b) *Ipomea batatus*  
d) *Musa paradisiaca*

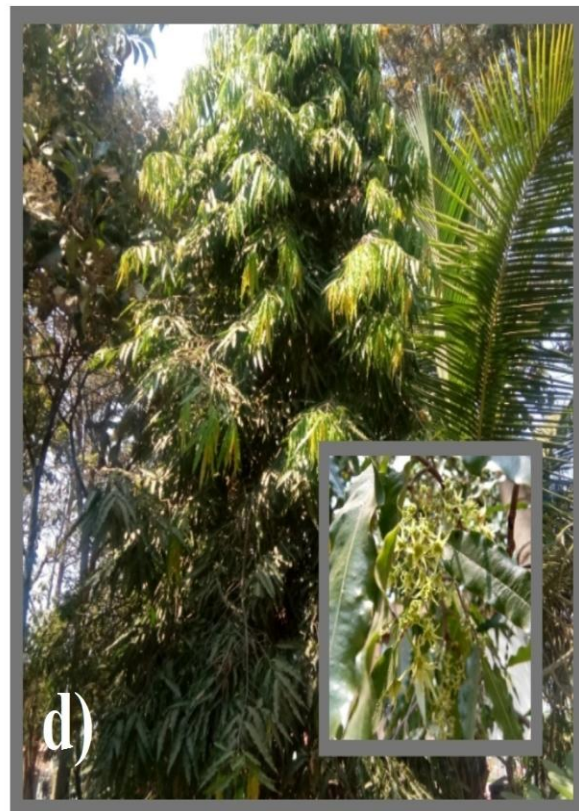




**Fig. 5:** a) *Nerium oleanders*  
c) *Ficus religiosa*

b) *Withania somnifera*  
d) *Plumeria alba*





**Fig. 6:** a) *Pongamia pinnata*  
c) *Santalum album*

b) *Ruta graveolens*  
d) *Saraca asoca*

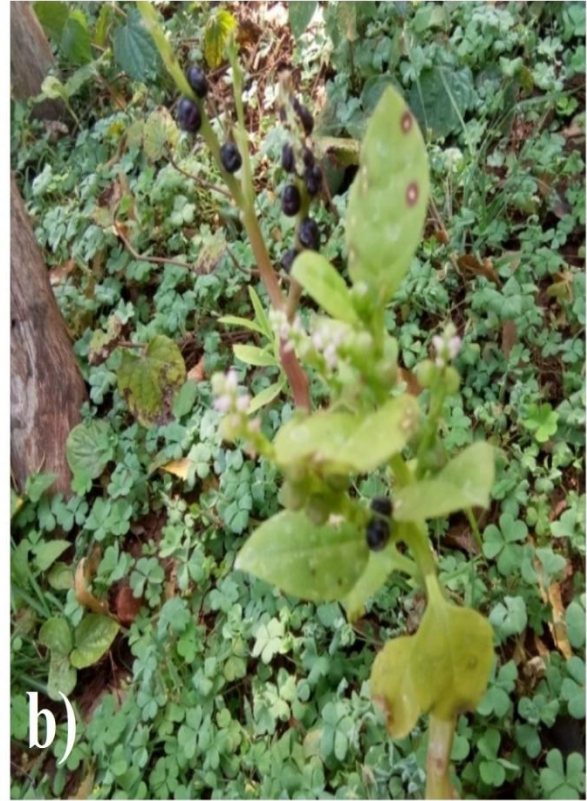




**Fig.7:** a) *Tectona grandis*  
c) *Aegle marmelos*

b) *Tinospora cardifolia*  
d) *Aloe barbadensis*





**Fig.8: a) *Azadiracta indica*  
c) *Magnifera indica***

**b) *Basella alba*  
d) *Moringa oleifera***

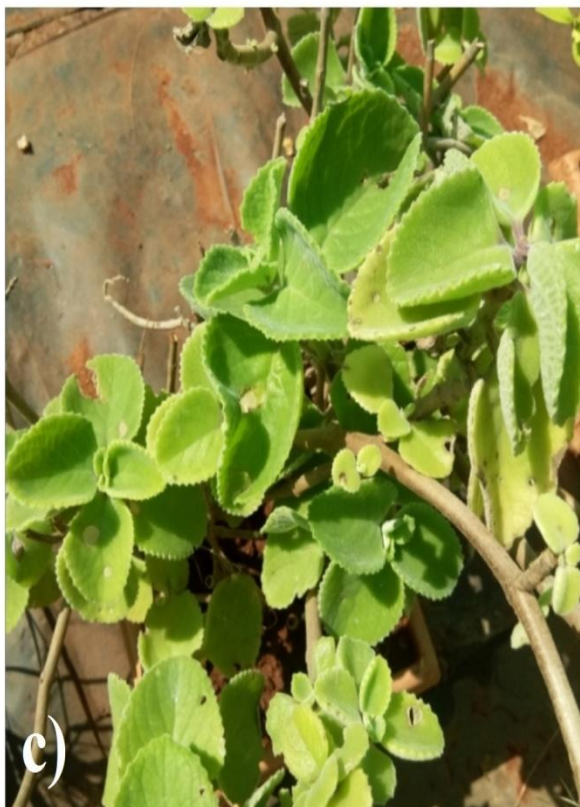




a)



b)



c)



d)

**Fig. 9: a) *Murraya Koenigii*  
c) *Plectranthus amboinicus***

**b) *Nyctanthus arbor-tristis*  
d) *Butea monosperma***





**Fig.10:** a) *Hibiscus rosa-sinensis*  
c) *Rosa centifolia*

b) *Leucas aspera*  
d) *Annona Squamosa*





**Fig.11:** a) *Areca catechu*

b) *Artocarpus heterophyllus*

c) *Carica papaya*

d) *Citrus limon*

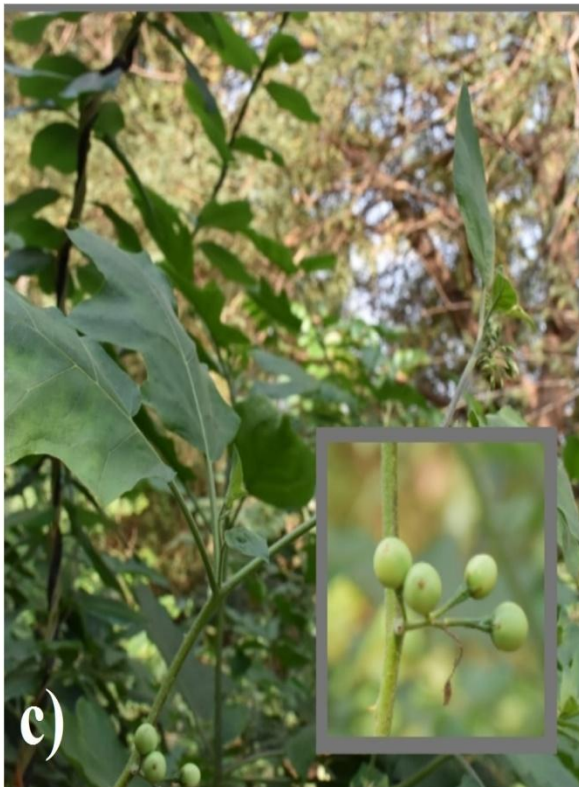




**Fig.12:** a) *Helicteres isora*  
c) *Piper nigrum*

b) *Phyllanthus emblica*  
d) *Psidium guajava*





**Fig.13 :** a) *Punica grantum*  
c) *Solanum nigrum*

b) *Solanum melongena*  
d) *Achyranthus aspera*





**Fig.14:** a) *Alternanthera sessilis*      b) *Amaranthus spinosus*  
c) *Andrographis paniculata*      d) *Cymbopogon citratus*





**Fig. 15:** a) *Cynodon dactylon*  
c) *Ocimum tenuiflorum*

b) *Homalocladiin platyeladum*  
d) *Piper betle*



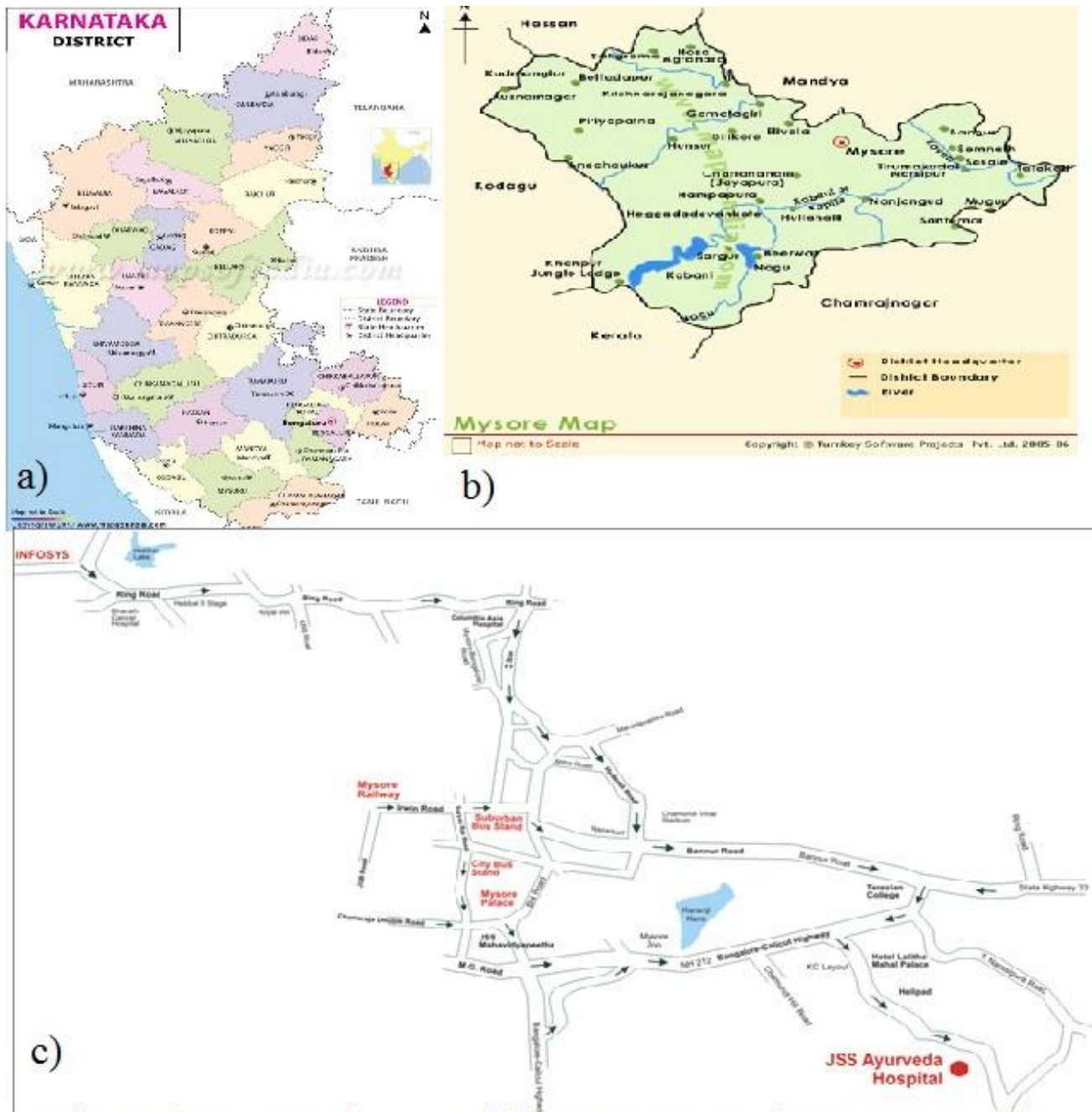


Fig. 1: a) Karnataka map, b) Mysuru map, c) Route map of JSS ayurvedic college





Fig 1: d) JSS Ayurvedic college campus mysuru